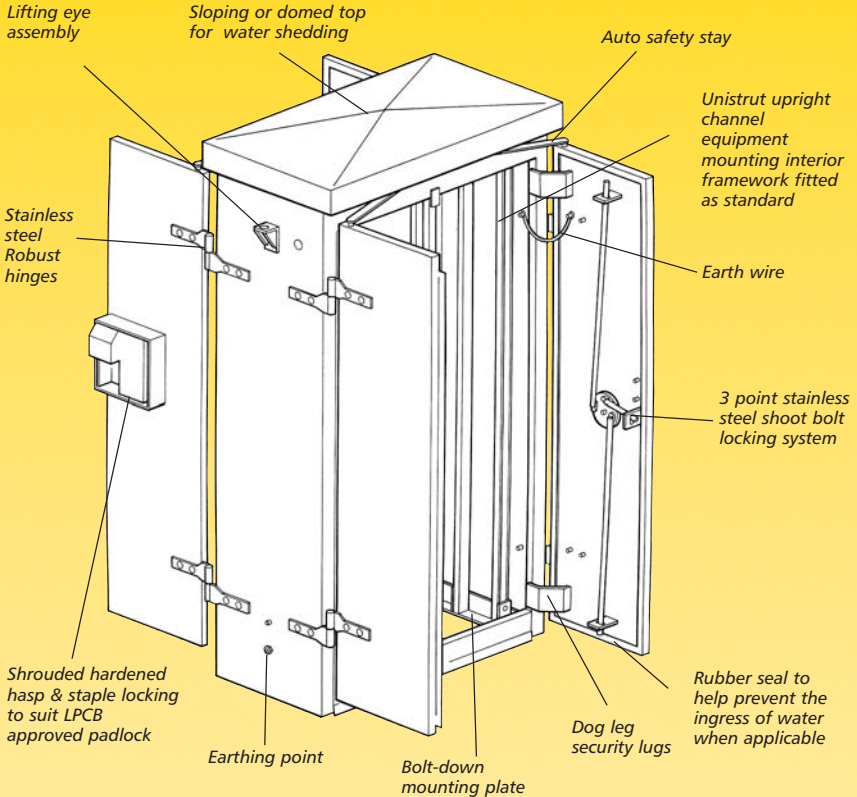
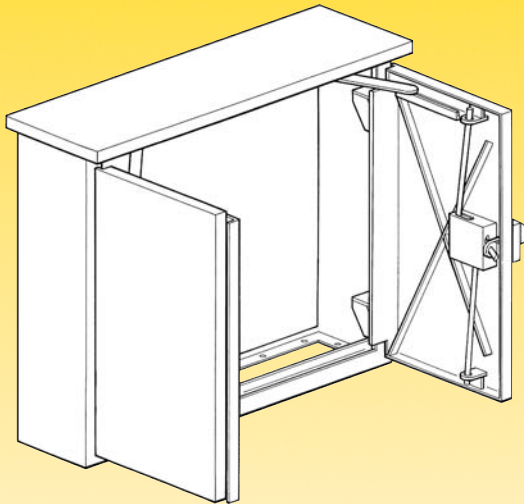


SECURITY AND GENERAL FEATURES OF THE TECHNORAIL ULTRASECURE CASE/CABINET RANGE

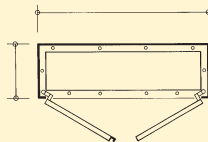
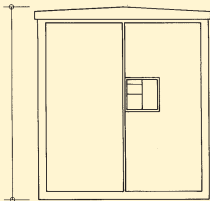


- ALL CABINETS CAN BE MADE TO SUIT INDIVIDUAL CUSTOMER REQUIREMENTS •
 - **LPCB SECURITY RATING APPROVED, LOCATION APPARATUS PRODUCTS** •
- LARGER CABINETS HAVE THE FACILITY TO BE TAKEN TO SITE IN A FLAT PACK SYSTEM FOR EASE OF SITE ASSEMBLY •
 - **LASER CUT IDENTIFICATION TO CUSTOMER REQUIREMENTS** •
 - **LOUVRE VENTS ACCESSORY POSITIONED WHERE REQUIRED** •
 - **HOT DIP GALVANISED AFTER MANUFACTURE TO BS EN ISO 1461** •
- EXTERNAL PAINT FINISHES ARE AVAILABLE FOR AESTHETIC APPEARANCE IF REQUIRED •
 - **ALTERNATIVE MATERIALS AVAILABLE ON REQUEST** •

ULTRASECURE TWIN DOOR CABINET



SECTION/PLAN DETAILS



TYPE CB2

PRODUCT USES

An UltraSecure, surface mounted cabinet enclosure for housing trackside/station equipment such as:

- Electrical instrumentation
- Trackside connections
- Telecommunications
- Radio communication equipment
- Points/switch heaters.

STANDARD PRODUCT FEATURES

- Any size available, large sizes will be supplied in flat pack system for site assembly (inc. bolts)
- Units made up to a 'WALK-IN' size
- Hidden door hinges for security
- 3 point shoot bolt locking with shrouded hasp and staple locking to suit Railtrack approved padlock
- Optional locking systems
- Internal bolt down flanges
- Manufactured from minimum 4mm steel plate
- Hot dip galvanised after manufacture to BS EN ISO 1461
- External paint finishes are available for aesthetic appearance if required and will be applied over etch primer and base coat
- Alternative materials available
- Security level 3 to combat Trespass and Vandalism

AVAILABILITY (as standard)

ACCESSORIES

- /D1 Identification marking (please specify)
- /LV Louvre Vent
- /HL Door hinged left (hinged right as standard)
- /PB Plywood backboard
- /PC Euro Profile flush cylinder
- /ALAWINT Alarm Package
- /BR1 Standard BR1 lock
- /DP Digital pad locking system
- /SC Swipe card locking
- /XP External paint colour (please specify)
- /RS Rubber seal to door

HOW TO ORDER/SPECIFY

Progression example for specifying:

1. Product Type: CB2
2. Add size ref. i.e. 1500height x 2000width x 900depth = /150-200-90
3. Add accessory: i.e. /LV - louvre vent

Full reference: CB2/150-200-90/LV